

SECUREMAIL GATEWAY AND DYNAMIC EXACT MATCH FILTERING

The SecureMail Gateway provides extensive scanning capabilities to examine the content of email messages and file attachments. If sensitive information is detected, the Gateway ensures that the message is encrypted prior to being sent over the Internet.

Generally content filtering is accomplished either by comparing the target against a fixed list of data, or by examining the content for patterns that may match a particular data string type. DataMotion provides several public fixed lists of data (such as FDA NDC numbers), as well as several common patterns (such as credit card numbers or Social Security Numbers).

However, one problem with pattern matching is that it is not exact, and may wrongly identify content (also called a “false positive”). For example, the number 0123456789 may look like a 10-digit customer ID number, but it may be also be a domestic phone number. This would result in the content being incorrectly flagged for encrypted delivery.

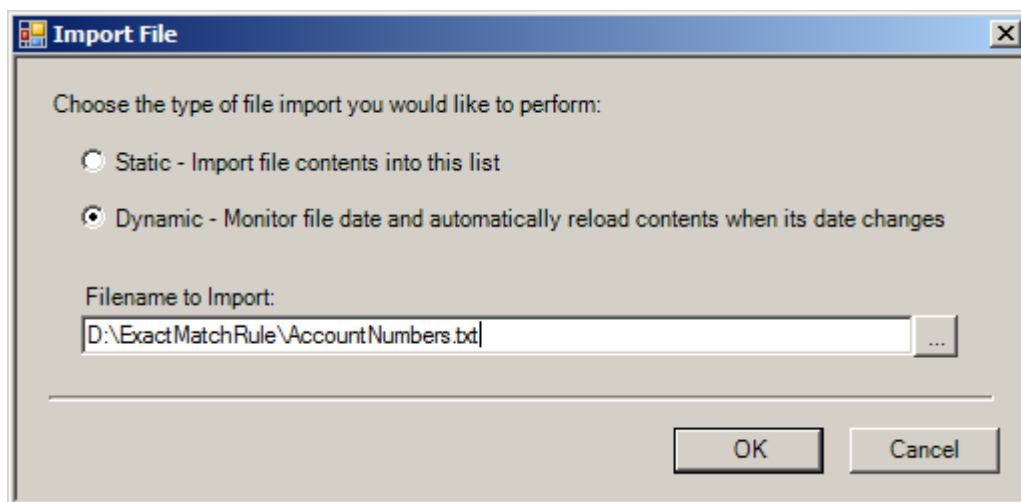
Exact Matching Filtering

The Exact Matching feature of the SecureMail Gateway solves this problem. Now, instead of using patterns to try and find information (such as customer account numbers), you can generate a list of those account numbers directly and then use Exact Matching, with its higher certainty, to filter your messages. This ensures you are looking for your exact data, not what the data pattern “looks like”, eliminating false positives or complicated regex patterns.

Of course your data is always changing; new customers are added, old ones leave, companies are acquired and two completely different data sets need to be merged. DataMotion allows you to dynamically update this information and have the SecureMail Gateway automatically leverage the new data immediately, allowing you to always scan against the latest, and most current set of data.

Configuring a Dynamic Exact Match Filter

To create an Exact Matching filter, you only need to specify the name of a text file as the rule condition. For example, when selecting the condition **Subject or Body or Attachments contain specific words**, click the **Import** button. At the Import File dialog, choose **Dynamic** and then select the filename in the browse dialog as shown below.



The file specified here is “watched” by the SecureMail Gateway. When the file is updated, it is automatically reloaded. This ensures that the latest data is always used and that the process can be automated.

Also, since an organization may have multiple different types of items to scan (for example, customer account numbers, customer Social Security Numbers), it is possible to add multiple dynamic files either to one rule or to multiple rules, providing broader coverage for your information.

Creating the Exact Match File

SQL export is the most common method DataMotion customers use to create the exact match file. For example, a scheduled job is set to run against the database where all the customer account numbers are exported to a single, sorted file. The job is run every 12-24 hours and overwrites the previous file. Every time the file is updated the SecureMail Gateway re-reads the file and starts using the new content.

Data Requirements for Exact Match Filtering

The contents of the file must match the following criteria:

- It is an ASCII text file
- It has one word, number or phrase to be scanned on each line (an entire line will be considered one block of data to be matched)
- The file is in DOS format, with a carriage return and line feed at the end of each line (`chr(13) + chr(10)`)
- The file is sorted in descending order (A to Z or 0 to 9) - Sorting will result in faster performance