

# ReplixFax<sup>®</sup> for Linux



100 percent Linux fax server solution delivering open standards advantage with reliable and versatile fax messaging capabilities

## Enterprise Fax Server with Open Source Advantage for Business Fax Automation

ReplixFax for Linux takes advantage of the open source Linux operating system and its strengths in supporting a secure, fast and efficient computing environment. The ReplixFax solution combined with Linux open standards enhances your business communication by seamlessly integrating efficient and powerful fax messaging capabilities into your business applications and network infrastructure. Built on a robust and scalable architecture with built-in high availability, the ReplixFax for Linux solution can manage any business fax requirements without compromising performance and reliability.

ReplixFax for Linux provides a full set of integration toolkits and web-based centralized system administration capabilities, and is fully integrated with automated inbound and outbound fax archiving capabilities to support regulatory compliance and fax records management.

## Fax-enable Any Business Application

ReplixFax for Linux offers a comprehensive set of toolkits to “fax-enable” any business application or develop a customized fax application. Available fax API and integration tools include:

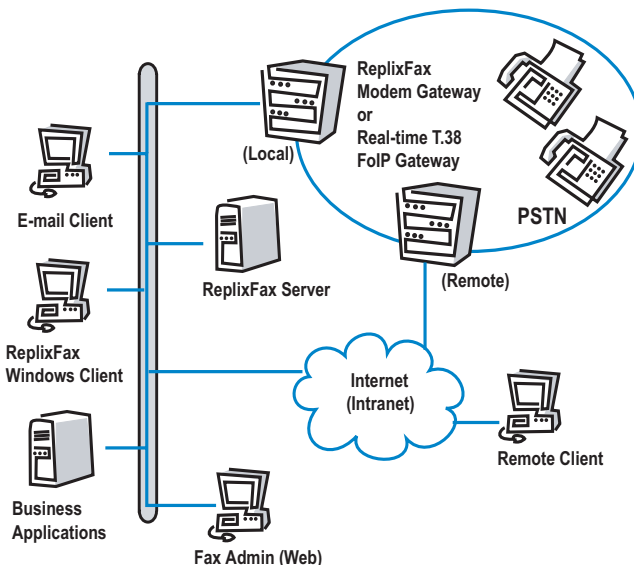
- Java API fax integration toolkit
- Windows API fax integration toolkit
- Command line fax API for fast, simple fax integration script development
- Pre- and Post-Fax Event Filters for ad-hoc fax workflow support

Full-featured ReplixFax API's and integration toolkits can easily work with your Windows, Java or custom legacy applications to eliminate costly manual interventions and time delays.

For instance, ReplixFax Java API offers true platform independence by providing application developers with the Java classes required for interacting with the ReplixFax server. This key feature can be incorporated into any application environment—such as trading floor applications, call centers, customer service, e-commerce or CRM.

## Features and Capabilities

- Scalable, high performance system architecture
- Windows Fax Client with Print2Fax integration of Windows desktop applications
- No lost or incomplete fax due to server or network failure during incoming fax session
- Automated fax-back confirmation to the sender for high value fax transactions
- Comprehensive Fax API and integration toolkits
- Server based rasterization of Microsoft Office and ODF documents



- Fax data managed in a relational database
- Fax status notification via e-mail
- Flexible configuration and load balancing among multiple servers and modem gateways
- Integration with SMTP e-mail, and Lotus Domino on Linux using Domino Linux API
- Automatic inbound fax routing to e-mail inbox, network printer or multiple users
- Inbound Routing support via DID, DTMF, DNIS, ANI, Fax port or manual routing
- Global phone number dialing rule support
- Least cost routing (LCR) over any IP network to bypass long distance phone charges
- Real-time T.38 fax over IP (FoIP) support
- Retransmission of failed pages
- Full support of global PSTN connectivity—Analog, Digital T1/E1 and ISDN

TACTICAL  
DIGITAL

Softlinx<sup>®</sup>

Partnered with:  
Tactical Digital Corp.  
www.tacdig.com  
7880 Rolling Woods Ct.  
Unit #101  
Springfield, VA 22152  
Phone: 1-888-821-0845  
Fax: 1-703-924-6109

## Scalable, Distributed Architecture

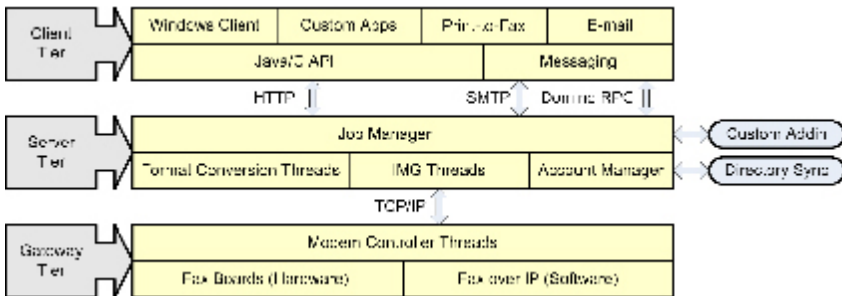
ReplixFAX for Linux is designed for performance and scalability from the ground up. Its three-tier distributed architecture consists of clients, fax servers and intelligent modem gateways (IMG's) that offers unlimited flexibility in configuring your enterprise fax system. You can easily upgrade the server or add extra modem gateways separately. All servers are capable of sending outbound fax traffic through any modem gateway on the network, whether on the same LAN or at a remote WAN location.

## Fax Archiving for Compliance using Any Document Management Repository

ReplixFAX for Linux is integrated with commercial document management systems for automated fax archiving and regulatory compliance support. Both inbound and outbound fax documents are automatically captured, indexed and stored for later search and retrieval into a document management system repository. Fax data such as sender identification, fax receive date or DID number can be captured automatically and used for indexing, automated filing and searching a fax document stored in the document management system repository.

## ReplixFAX for Linux technical specifications

● ReplixFAX for Linux Server Platform	Red Hat Enterprise Linux 5.0
● ReplixFAX for Linux Client Platform	Microsoft Windows XP, Vista
● Email Clients	Any SMTP mail client
● Intelligent Modem Gateway (IMG) Platform	Red Hat Enterprise Linux 5.0; Microsoft Windows 2003, 2008 (64bit)
● Fax Boards and FoIP Software	Dialogic® Brooktrout® Analog and Digital T1, E1 and ISDN fax cards, SR140 FoIP software
● Telephone Network	Analog, Digital T1, E1, ISDN
● IP Fax Support	Real-time T.38 Fax over IP, Store-and-forward T.37 Email to Fax, IP Least Cost Routing
● Inbound routing	DID, DTMF, DNIS, CSID, ANI, Fax Port, Network Printer or Manual Routing
● Server-based rasterization for native file attachments	ASCII text, TIF, Postscript, PDF, Microsoft Office*, ODF *requires Open Office



## The Softlinx Solution

Softlinx ReplixFAX is an ideal enterprise fax solution to consolidate all of your fax communication needs across multiple office locations, or replace multiple legacy fax servers into a single, centralized Fax over IP (FoIP) system. Softlinx helped many leading organizations worldwide successfully automate their business fax communications and save costs. Softlinx is a leading vendor for mission critical business fax messaging solutions you can depend on.

For more information on ReplixFAX for Linux, visit our website at <http://www.softlinx.com>.

## Web-based Server Administration

With a full set of central administration and management capabilities, ReplixFAX administrators can check the status of all faxes in queue, manage and control user accounts and server configurations, and troubleshoot the local or remote system using a Web browser. Server logs can be viewed and managed through the Web administration interface and can be used for remote diagnostics and troubleshooting. Multi-level (Server, Department, User) user management capability provides a convenient method to manage hierarchical fax preference settings and control over the web according to enterprise organizational structure and preferences.



Partnered with:  
 Tactical Digital Corp.  
[www.tacdig.com](http://www.tacdig.com)  
 7880 Rolling Woods Ct.  
 Unit #101  
 Springfield, VA 22152  
 Phone: 1-888-821-0845  
 Fax: 1-703-924-6109